

Anti-ITGA2B antibody

Cat. No.	ml222551
Package	25 µl/100 µl/200 µl
Storage	-20°C, pH7.4 PBS, 0.05% NaN ₃ , 40% Glycerol

Product overview

Description	Anti-ITGA2B rabbit polyclonal antibody
Applications	ELISA, WB
Immunogen	Fusion protein of human ITGA2B
Reactivity	Human, Mouse
Content	0.5 mg/ml
Host species	Rabbit
Ig class	Immunogen-specific rabbit IgG
Purification	Antigen affinity purification

Target information

Symbol	ITGA2B
Full name	integrin, alpha 2b (platelet glycoprotein IIb of IIb/IIIa complex, antigen CD41)
Synonyms	GT; GTA; CD41; GP2B; HPA3; CD41B; GPIIb; BDPLT2; BDPLT16
Swissprot	P08514

Target Background

ITGA2B encodes integrin alpha chain 2b. Integrins are heterodimeric integral membrane proteins composed of an alpha chain and a beta chain. Alpha chain 2b undergoes post-translational cleavage to yield disulfide-linked light and heavy chains that join with beta 3 to form a fibronectin receptor expressed in platelets that plays a crucial role in coagulation. Mutations that interfere with this role result in thrombasthenia. In addition to adhesion, integrins are known to participate in cell-surface mediated signalling.

订购热线: 4008-898-798

Applications

Western blotting

Predicted band size: 113 kDa

Positive control: Human placenta and fetal liver tissue

Recommended dilution: 500-2000

Gel: 6%SDS-PAGE

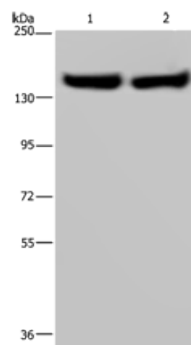
Lysate: 40 µg

Lane 1-2: Human placenta tissue, Human fetal liver tissue

Primary antibody: ml222551(ITGA2B Antibody) at dilution 1/650

Secondary antibody: Goat anti rabbit IgG at 1/8000 dilution

Exposure time: 5 minutes



ELISA

Recommended dilution: 2000-5000

联系电话: 4008-898-798, 021-61725725

联系QQ: 2881505695, 2881505696

邮箱: mlbio_cn@yeah.net

网址: www.mlbio.cn