

Anti-GBP5 antibody

Cat. No.	ml222408
Package	25 µl/100 µl/200 µl
Storage	-20°C, pH7.4 PBS, 0.05% NaN ₃ , 40% Glycerol

Product overview

Description	Anti-GBP5 rabbit polyclonal antibody
Applications	ELISA, WB, IHC
Immunogen	Fusion protein of human GBP5
Reactivity	Human
Content	0.4 mg/ml
Host species	Rabbit
Ig class	Immunogen-specific rabbit IgG
Purification	Antigen affinity purification

Target information

Symbol	GBP5
Full name	guanylate binding protein 5

Synonyms	GBP-5
Swissprot	Q96PP8

Target Background

GBP5 (guanylate binding protein 5), also known as GBP-TA antigen, is a 586 amino acid protein that localizes to the cytoplasmic side of the cell membrane. Belonging to the interferon (IFN)-inducible guanylate-binding protein (GBP) family, GBP5 may be involved in the inflammatory response or with cell proliferation and is suggested to have possible cancer-related functions. The gene encoding GBP5 maps to human chromosome 1, which spans 260 million base pairs, contains over 3,000 genes and comprises nearly 8% of the human genome.

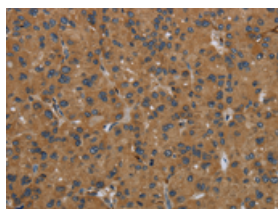
Applications

Immunohistochemistry

Predicted cell location: Cytoplasm

Positive control: Human liver cancer

Recommended dilution: 50-200

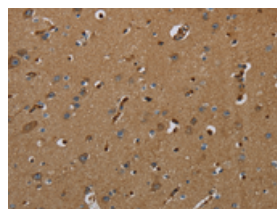


The image on the left is immunohistochemistry of paraffin-embedded Human liver cancer tissue using ml222408(GBP5 Antibody) at dilution 1/50, on the right is treated with fusion protein. (Original magnification: ×200)

Predicted cell location: Cytoplasm

Positive control: Human brain

Recommended dilution: 50-200



The image on the left is immunohistochemistry of paraffin-embedded Human brain tissue using ml222408(GBP5 Antibody) at dilution 1/50, on the right is treated with fusion protein. (Original magnification: ×200)

Western blotting

Predicted band size: 67 kDa

Positive control: Human placenta tissue

Recommended dilution: 200-1000

Gel: 6%SDS-PAGE

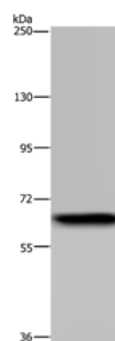
Lysate: 40 µg

Lane: Human placenta tissue

Primary antibody: ml222408(GBP5 Antibody) at dilution 1/300

Secondary antibody: Goat anti rabbit IgG at 1/8000 dilution

Exposure time: 5 minutes



ELISA

Recommended dilution: 1000-2000

联系电话: 4008-898-798, 021-61725725

联系QQ: 2881505695, 2881505696

邮箱: mlbio_cn@yeah.net

网址: www.mlbio.cn