

Anti-SMPD2 antibody

Cat. No.	ml125865
Package	25 µl/100 µl/200 µl
Storage	-20°C, pH7.4 PBS, 0.05% NaN ₃ , 40% Glycerol

Product overview

Description	Anti-SMPD2 rabbit polyclonal antibody
Applications	ELISA, WB, IHC
Immunogen	Fusion protein of human SMPD2
Reactivity	Human, Mouse, Rat
Content	1.26 mg/ml
Host species	Rabbit
Ig class	Immunogen-specific rabbit IgG
Purification	Antigen affinity purification

Target information

Symbol	SMPD2
Full name	sphingomyelin phosphodiesterase 2
Synonyms	ISC1; NSMASE; NSMASE1
Swissprot	O60906

Target Background

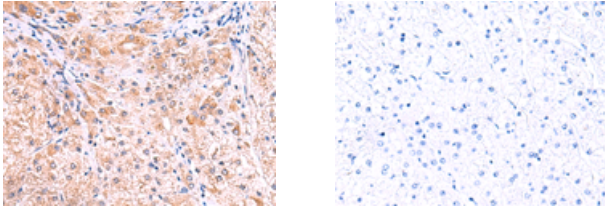
This gene encodes a protein which was initially identified as a sphingomyelinase based on sequence similarity between bacterial sphingomyelinases and a yeast protein. Subsequent studies showed that its biological function is less likely to be as a sphingomyelinase and instead as a lysophospholipase.

订购热线: 4008-898-798

Applications

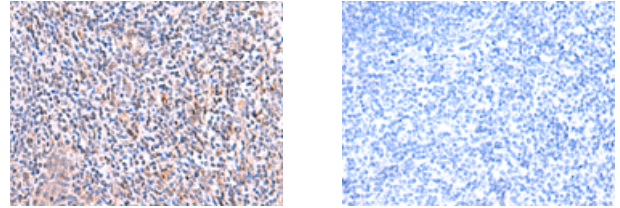
Immunohistochemistry

Predicted cell location: Cytoplasm
Positive control: Human liver cancer
Recommended dilution: 50-300



The image on the left is immunohistochemistry of paraffin-embedded Human liver cancer tissue using ml125865(SMPD2 Antibody) at dilution 1/70, on the right is treated with fusion protein. (Original magnification: ×200)

Predicted cell location: Cytoplasm
Positive control: Human tonsil
Recommended dilution: 50-300

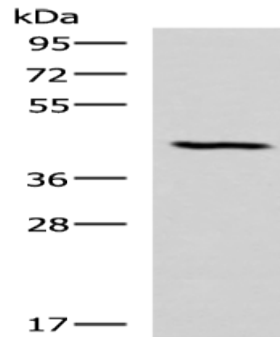


The image on the left is immunohistochemistry of paraffin-embedded Human tonsil tissue using ml125865(SMPD2 Antibody) at dilution 1/70, on the right is treated with fusion protein. (Original magnification: ×200)

Western blotting

Predicted band size: 48 kDa
Positive control: Mouse lung tissue lysate
Recommended dilution: 1000-5000

Gel: 8%SDS-PAGE
Lysate: 40 µg
Lane: Mouse lung tissue lysate
Primary antibody: ml125865(SMPD2 Antibody) at dilution 1/1000
Secondary antibody: Goat anti rabbit IgG at 1/5000 dilution
Exposure time: 2 minutes



ELISA

Recommended dilution: 5000-10000

联系电话: 4008-898-798, 021-61725725

联系QQ: 2881505695, 2881505696

邮箱: mlbio_cn@yeah.net

网址: www.mlbio.cn