

Anti-RASSF7 antibody

Cat. No.	ml122989
Package	25 µl/100 µl/200 µl
Storage	-20°C, pH7.4 PBS, 0.05% NaN3, 40% Glycerol

Product overview

Description	Anti-RASSF7 rabbit polyclonal antibody
Applications	ELISA, WB, IHC
Immunogen	Fusion protein of human RASSF7
Reactivity	Human
Content	0.7 mg/ml
Host species	Rabbit
Ig class	Immunogen-specific rabbit IgG
Purification	Antigen affinity purification

Target information

Symbol	RASSF7
Full name	Ras association (RalGDS/AF-6) domain family (N-terminal) member 7
Synonyms	HRC1; HRAS1; C11orf13
Swissprot	Q02833

Target Background

RASSF7 (Ras association domain-containing protein 7), also designated HRAS1-related cluster protein 1, is a 373 amino acid protein that localizes to the centrosome. RASSF7, RASSF8, RASSF9 and RASSF10 are four evolutionary conserved proteins that are collectively known as the N-terminal RASSF family. Expressed in skin, neural tube and eye, RASSF7 is believed to play an essential role in mitosis. Further supporting its mitotic role, knockdown of Xenopus RASSF7 has been shown to influence cell failure to form mitotic spindle and also cause nuclear breakdown and apoptosis.

订购热线: 4008-898-798

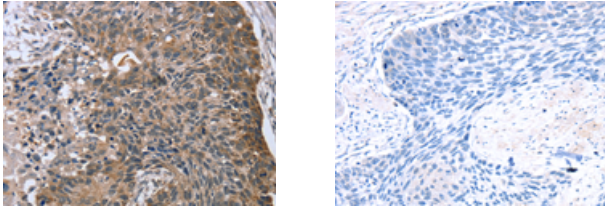
Applications

Immunohistochemistry

Predicted cell location: Cytoplasm

Positive control: Human esophagus cancer

Recommended dilution: 25-100



The image on the left is immunohistochemistry of paraffin-embedded Human esophagus cancer tissue using ml122989(RASSF7 Antibody) at dilution 1/45, on the right is treated with fusion protein. (Original magnification: $\times 200$)

Western blotting

Predicted band size: 40 kDa

Positive control: Raji cells

Recommended dilution: 500-2000

Gel: 8%SDS-PAGE

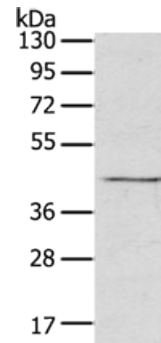
Lysate: 60 μ g

Lane: Raji cells

Primary antibody: ml122989(RASSF7 Antibody) at dilution 1/800

Secondary antibody: Goat anti rabbit IgG at 1/8000 dilution

Exposure time: 5 seconds



ELISA

Recommended dilution: 2000-5000

联系电话: 4008-898-798, 021-61725725

联系QQ: 2881505695, 2881505696

邮箱: mlbio_cn@yeah.net

网址: www.mlbio.cn