

Anti-RAB9A antibody

Cat. No.	ml122963
Package	25 µl/100 µl/200 µl
Storage	-20°C, pH7.4 PBS, 0.05% NaN ₃ , 40% Glycerol

Product overview

Description	Anti-RAB9A rabbit polyclonal antibody
Applications	ELISA, WB, IHC
Immunogen	Fusion protein of human RAB9A
Reactivity	Human, Mouse, Rat
Content	0.2 mg/ml
Host species	Rabbit
Ig class	Immunogen-specific rabbit IgG
Purification	Antigen affinity purification

Target information

Symbol	RAB9A
Full name	RAB9A, member RAS oncogene family
Synonyms	RAB9
Swissprot	P51151

Target Background

Ras-related protein Rab-9A is a protein that in humans is encoded by the RAB9A gene. Rab 9A is a 201 amino acid protein that localizes to the cytoplasmic side of the cell membrane, as well as to the membrane of the Golgi apparatus and the ER, and is involved in the transport of proteins between endosomes and the trans Golgi network.

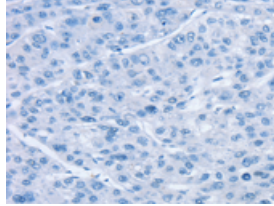
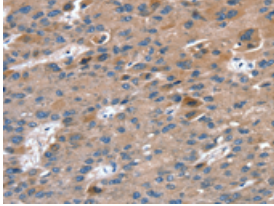
Applications

Immunohistochemistry

Predicted cell location: Cytoplasm

Positive control: Human liver cancer

Recommended dilution: 25-100

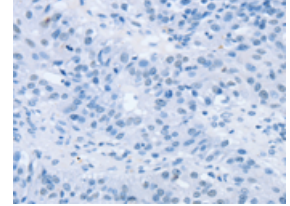
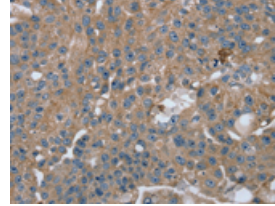


The image on the left is immunohistochemistry of paraffin-embedded Human liver cancer tissue using ml122963(RAB9A Antibody) at dilution 1/20, on the right is treated with fusion protein. (Original magnification: $\times 200$)

Predicted cell location: Cytoplasm

Positive control: Human breast cancer

Recommended dilution: 25-100



The image on the left is immunohistochemistry of paraffin-embedded Human breast cancer tissue using ml122963(RAB9A Antibody) at dilution 1/20, on the right is treated with fusion protein. (Original magnification: $\times 200$)

Western blotting

Predicted band size: 23 kDa

Positive control: HeLa, hepg2, RAW264.7 and NIH/3T3 cells

Recommended dilution: 1000-5000

Gel: 12% SDS-PAGE

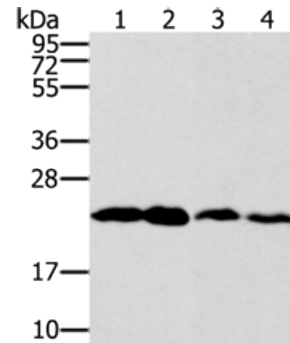
Lysate: 40 μ g

Lane 1-4: HeLa cells, hepg2 cells, RAW264.7 cells, NIH/3T3 cells

Primary antibody: ml122963(RAB9A Antibody) at dilution 1/250

Secondary antibody: Goat anti rabbit IgG at 1/8000 dilution

Exposure time: 30 seconds



ELISA

Recommended dilution: 2000-10000

联系电话: 4008-898-798, 021-61725725

联系QQ: 2881505695, 2881505696

邮箱: mlbio_cn@yeah.net

网址: www.mlbio.cn