

Anti-TGM4 antibody

Cat. No.	ml262352
Package	25 µl/100 µl/200 µl
Storage	-20°C, pH7.4 PBS, 0.05% NaN ₃ , 40% Glycerol

Product overview

Description	Anti-TGM4 rabbit polyclonal antibody
Applications	ELISA, IHC
Immunogen	Synthetic peptide of human TGM4
Reactivity	Human
Content	0.9 mg/ml
Host species	Rabbit
Ig class	Immunogen-specific rabbit IgG
Purification	Antigen affinity purification

Target information

Symbol	TGM4
Full name	transglutaminase 4
Synonyms	TGP; hTGP
Swissprot	P49221

Target Background

Associated with the mammalian reproductive process. Catalyzes the cross-linking of proteins and the conjugation of polyamines to specific proteins in the seminal tract.

订购热线: 4008-898-798

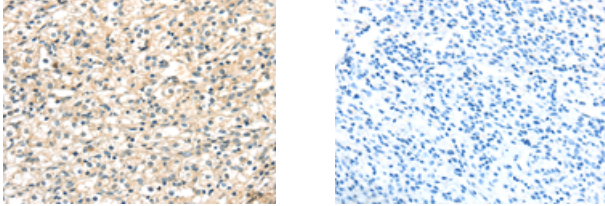
Applications

Immunohistochemistry

Predicted cell location: Cytoplasm

Positive control: Human prostate cancer

Recommended dilution: 10-50



The image on the left is immunohistochemistry of paraffin-embedded Human prostate cancer tissue using ml262352(TGM4 Antibody) at dilution 1/20, on the right is treated with synthetic peptide. (Original magnification: $\times 200$)

ELISA

Recommended dilution: 1000-2000

联系电话: 4008-898-798, 021-61725725

联系QQ: 2881505695, 2881505696

邮箱: mlbio_cn@yeah.net

网址: www.mlbio.cn