

## Anti-BOP1 antibody

<b>Cat. No.</b>	ml163624
<b>Package</b>	25 µl/100 µl/200 µl
<b>Storage</b>	-20°C, pH7.4 PBS, 0.05% NaN <sub>3</sub> , 40% Glycerol

### Product overview

<b>Description</b>	Anti-BOP1 rabbit polyclonal antibody
<b>Applications</b>	ELISA, IHC
<b>Immunogen</b>	Synthetic peptide of human BOP1
<b>Reactivity</b>	Human, Mouse, Rat
<b>Content</b>	1 mg/ml
<b>Host species</b>	Rabbit
<b>Ig class</b>	Immunogen-specific rabbit IgG
<b>Purification</b>	Antigen affinity purification

### Target information

<b>Symbol</b>	BOP1
<b>Full name</b>	block of proliferation 1
<b>Synonyms</b>	
<b>Swissprot</b>	Q14137

### Target Background

BOP1(block of proliferation 1 protein) is a 746 amino acid highly conserved non-ribosomal protein that is involved in ribosome biogenesis. Truncation of the amino terminus of BOP1 leads to cell growth arrest in the G1 phase and specific inhibition of 28S and 5.8S rRNA synthesis, as well as a deficit in the cytosolic 60S ribosomal subunit. This suggests that BOP1 is involved in the formation of mature rRNAs and in the biogenesis of the 60S ribosomal subunit. BOP1 physically interacts with pescadillo (a protein involved in cell proliferation) and enables efficient incorporation of pescadillo into the nucleolar preribosomal complexes, thereby affecting rRNA maturation and the cell cycle. The BOP1-pescadillo complex is also necessary for biogenesis of 60S ribosomal subunits. Deregulation of BOP1 may lead to colorectal tumorigenesis.

订购热线: 4008-898-798

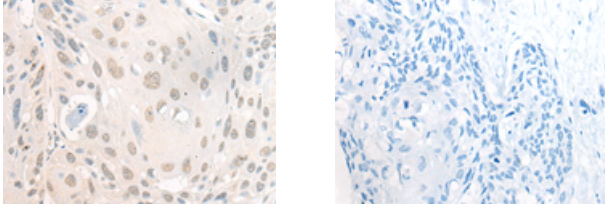
#### Applications

##### Immunohistochemistry

Predicted cell location: Nucleus

Positive control: Human esophagus cancer

Recommended dilution: 20-100



The image on the left is immunohistochemistry of paraffin-embedded Human esophagus cancer tissue using ml163624(BOP1 Antibody) at dilution 1/30, on the right is treated with synthetic peptide. (Original magnification:  $\times 200$ )

##### ELISA

Recommended dilution: 5000-10000

联系电话: 4008-898-798, 021-61725725

联系QQ: 2881505695, 2881505696

邮箱: [mlbio\\_cn@yeah.net](mailto:mlbio_cn@yeah.net)

网址: [www.mlbio.cn](http://www.mlbio.cn)